

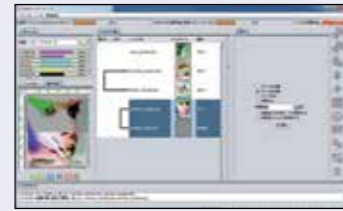
Intuitive and user-friendly operation



1. Easy to follow icons enable intuitive and user-friendly operation



2. Related settings feature in one window to simplify RIP operations with 'Register as Favourite' option available for regularly used layouts



3. Printing progress can be monitored on the main screen

**3-layer printing**

Enables simultaneous 3-layer printing:  
e.g. Colour → White → Colour

**Web update function is supported:**

This facility enables easy program updates and profile downloading to be performed via the internet.

**Specifications**

	JV300-130	JV300-160
Print head	On-demand piezo head (staggered dual-head)	
Resolution	360 dpi, 540 dpi, 720 dpi, 1440 dpi	
Drop size	Min. 4pl, Max.35pl	
Head height	2.0mm/2.5mm/3.0mm (+1.0mm or +2.0mm) * manual adjustment	
Ink type / colour	<b>Solvent ink</b> <b>ES3</b> (C, M, Y, K, Lc, Lm) - <b>SS21</b> (C, M, Y, K, Lc, Lm, Lk, Or, W) - <b>BS3 / BS4</b> (C, M, Y, K) <b>Water-based sublimation ink</b> <b>Sb53</b> (Bl, M, Y, K, DK, Lb, Lm) - <b>Sb54</b> (Bl, M, Y, K)	
Ink capacity	ES3: 440ml Ink cartridge SS21: 440ml Ink cartridge / 2L Ink pack* (W:220ml cartridge only) BS3 / BS4: 600ml Ink pack / 2L Ink pack* Sb53: 440ml Ink cartridge / 2L Ink pack* Sb54: 2L Ink pack*	
Max. printing width	Max.1,361mm	Max.1,610mm
Max. media width	Max.1,371mm	Max.1,620mm
Media thickness	1.0mm or less	
Roll weight	40kg or less	
Dimensions (W x D x H)	2,541mm x 707mm x 1,392mm	2,793mm x 707mm x 1,392mm
Weight	170.6kg	182.4kg
Power supply	2x Single phase (AC100-120V/220-240V +/-10%) 50/60Hz±1Hz	
Power consumption	1,440W×2 or less (100V) / 1,920W×2 or less (200V)	
Applicable standards	VCCI class A / FCC class A / CE Marking (EMC, Low Voltage and Machinery) / CB report / UL60950-1ETL / RoHS / REACH / CCC (pending) / Energy Star / RCM	
Operational environment	Temperature: 20-30 °C (68-86 °F) Humidity: 35-65% Rh (Non condensing)	

\* Optional MBIS (Mimaki Bulk Ink System) is required for using 2L Ink pack.

**Supplies**

Item	Colour		
ES3	Cyan	SPC-0440C	440ml Ink cartridge
	Magenta	SPC-0440M	
	Yellow	SPC-0440Y	
	Black	SPC-0440K	
	Light Cyan	SPC-0440LC	
SS21	Light Magenta	SPC-0440LM	440ml Ink cartridge
	Cyan	SPC-0501C	
	Magenta	SPC-0501M	
	Yellow	SPC-0501Y	
	Black	SPC-0501K	
BS3	Light Cyan	SPC-0501LC	2,000ml Ink pack
	Light Magenta	SPC-0501LM	
	Orange	SPC-0501Or	
	Light Black	SPC-0501Lk	
	White	SPC-0504W-2	
	Cyan	SPC-0588C	
	Magenta	SPC-0588M	
	Yellow	SPC-0588Y	
	Black	SPC-0588K	
	Light Cyan	SPC-0588LC	
Light Magenta	SPC-0588LM		
BS4	Orange	SPC-0588Or	2,000ml Ink pack
	Light Black	SPC-0588Lk	

**Supplies**

Item	Colour	440ml Ink cartridge	2,000ml Ink pack
Sb53	Blue	SB53-BL-44	SB53-BL-2L
	Magenta	SB53-M-44	SB53-M-2L
	Yellow	SB53-Y-44	SB53-Y-2L
	Black	SB53-K-44	SB53-K-2L
	Deep Black	SB53-DK-44	SB53-DK-2L
	Light Blue	SB53-LBL-44	SB53-LBL-2L
	Light Magenta	SB53-LM-44	SB53-LM-2L
Sb54	Blue		SB54-BLT-2L
	Magenta		SB54-MT-2L
	Yellow		SB54-YT-2L
	Black		SB54-KT-2L

Item	Colour	600ml Ink pack	2,000ml Ink pack
BS3	Cyan	SPC-0667C	SPC-0693C
	Magenta	SPC-0667M	SPC-0693M
	Yellow	SPC-0667Y	SPC-0693Y
	Black	SPC-0667K	SPC-0693K
BS4	Cyan	BS4-C-60	BS4-C-2L
	Magenta	BS4-M-60	BS4-M-2L
	Yellow	BS4-Y-60	BS4-Y-2L
	Black	BS4-K-60	BS4-K-2L

• Some of the samples in this folder are artificial renderings • Specifications, design and dimensions stated in this folder may be subject to change without notice (for technical improvements, etc.)  
 • The corporate and merchandise names written on this folder are the trademark of the respective corporations • Inkjet printers print using extreme fine dots, so colours may vary after replacement of the printing heads, also note that if using multiple printer units, colours could vary slightly from one unit to other unit due to slight individual differences • Composer's errors reserved

*JV300 Series*



**Versatile, high-quality production printer...**



the power to

create...



# Next-generation printer with beautiful output and high productivity

Mimaki's latest high performance JV300 Series sets a new bench mark for professional wide format printers. With the unrivalled versatility of multiple ink types, the JV300 delivers stunning photo-quality prints at class-leading speeds and provides the ultimate wide format solution for sign & graphics professionals, sportswear and fashion manufacturers, print shops and more.

## JV300 series delivers ...

- Fast printing speeds up to 105.9m<sup>2</sup> per hour
- High quality print resolution of up to 1,440 dpi
- Two different printing widths: 1,361mm and 1,610mm
- Choice of multiple eco-solvent and dye sub ink sets:
  - 9-colour options (SS21) including; Orange, Light Black & White inks
  - Vibrant 6-colour dye sub options (Sb53)
- Nozzle Check Unit (NCU) and Nozzle Recovery System (NRS) ensures continuous print operations
- UISS and optional MBIS on board 2 litre bulk ink system
- 3-way intelligent heater

**SOLVENT & DYE SUB INKS**  
**2 PRINT WIDTHS AVAILABLE**  
**1,440 DPI MAX RESOLUTION**  
**4/6/7/8 COLOUR MODES**  
**105.9m<sup>2</sup>/h MAX. SPEED**

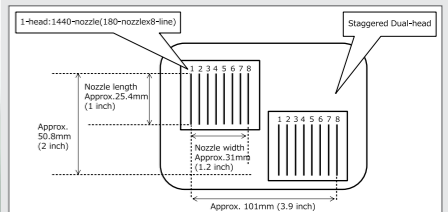
*JV300 Series*  
**JV300-130 / JV300-160**



HIGH PRODUCTIVITY

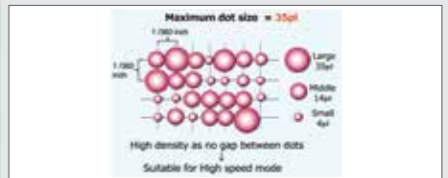
### Staggered Dual Print Head

Ensures wide band printing, even at high print speeds.



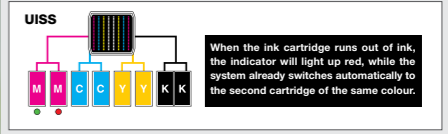
### Large ink dot size in high speed mode

Delivers high density print by removing the gap between dots.



### Uninterrupted Ink Supply System (UISS)

Utilises two cartridges per colour in 4-colour mode. When one cartridge runs out of ink the system switches automatically to the second cartridge of the same colour, enabling long unattended printing.



**Create ...** Signage, Vehicle graphics, PoS, Banners, Posters, Fashion & Sportswear, Promotional, Exhibition graphics, Stickers, Garment marking, Canvas prints and much more...

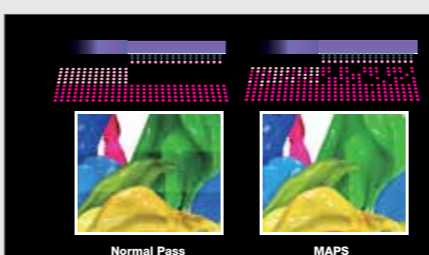
## KEY TECHNICAL FEATURES ...

HIGH PRINT SPEEDS

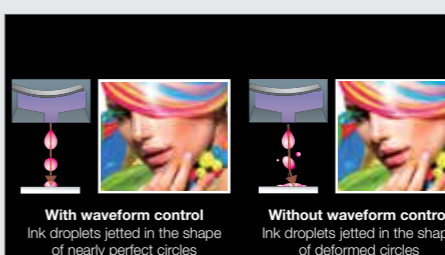
4-colour (C, M, Y, K)	8-colour (C, M, Y, K, L, Lc, Lm, Lk)	6-colour + White (C, M, Y, K, L, Lc)
<b>PVC</b> Draft 540x720dpi 4Pass Bi Hi <b>32.7m<sup>2</sup>/h</b> High Speed 720x1080dpi 6Pass Bi Hi <b>20.2m<sup>2</sup>/h</b> Standard 720x1440dpi 12Pass Bi Hi <b>10.4m<sup>2</sup>/h</b> High Quality 1440x1440dpi 16Pass Bi Hi <b>4.3m<sup>2</sup>/h</b>	<b>PVC</b> Draft 540x360dpi 1Pass Bi Hi <b>105.9m<sup>2</sup>/h</b> High Speed 540x720dpi 2Pass Bi Hi <b>69.2m<sup>2</sup>/h</b> Standard 540x720dpi 4Pass Bi Hi <b>32.7m<sup>2</sup>/h</b> High Quality 720x1080dpi 8Pass Bi Hi <b>15.4m<sup>2</sup>/h</b> High Quality 720x1440dpi 24Pass Bi Hi <b>5.3m<sup>2</sup>/h</b>	<b>PVC</b> Draft 540x360dpi 2Pass Bi Hi <b>50.5m<sup>2</sup>/h</b> High Speed 540x720dpi 4Pass Bi Hi <b>33.9m<sup>2</sup>/h</b> Standard 540x720dpi 8Pass Bi Hi <b>17.4m<sup>2</sup>/h</b> High Quality 720x1080dpi 16Pass Bi Hi <b>7.9m<sup>2</sup>/h</b> High Quality 720x1440dpi 32Pass Bi Hi <b>1.3m<sup>2</sup>/h</b>
<b>Banner</b> Super Draft 360x360dpi 1Pass Bi Hi <b>105.9m<sup>2</sup>/h</b> Draft 540x360dpi 2Pass Bi Hi <b>69.2m<sup>2</sup>/h</b> High Speed 720x1080dpi 4Pass Bi Hi <b>32.7m<sup>2</sup>/h</b> Standard 720x1440dpi 12Pass Bi Hi <b>10.4m<sup>2</sup>/h</b> High Quality 1440x1440dpi 16Pass Bi Hi <b>4.3m<sup>2</sup>/h</b>	<b>Banner</b> Draft 360x360dpi 2Pass Bi Hi <b>50.5m<sup>2</sup>/h</b> High Speed 540x720dpi 4Pass Bi Hi <b>33.9m<sup>2</sup>/h</b> Standard 540x720dpi 8Pass Bi Hi <b>17.4m<sup>2</sup>/h</b> High Quality 720x1080dpi 16Pass Bi Hi <b>7.9m<sup>2</sup>/h</b> High Quality 720x1440dpi 32Pass Bi Hi <b>1.3m<sup>2</sup>/h</b>	<b>2-layer print (colour &gt; white &gt; colour)</b> General transparency 0 1 2 3 4 High Speed 720x1080dpi 14Pass Bi Hi <b>3.1m<sup>2</sup>/h</b> Standard 720x1080dpi 18Pass Bi Hi <b>2.3m<sup>2</sup>/h</b> High Quality 720x1440dpi 32Pass Bi Hi <b>0.8m<sup>2</sup>/h</b>

BEAUTIFUL OUTPUT

**MAPS (Mimaki Advanced Pass System)**  
 Reduces banding by dispersing ink drops between passes.



**Waveform Control Technology**  
 Ensures high quality print resolution, by jetting ink drops in straight lines with almost perfect round dots, delivering clear and sharp letters, lines and edges.



**Orange & Light Black SS21 Inks**  
 New orange process ink delivers wider gamut to cover 94% of the PANTONE colour chart. Light black gives superior grey balance control and accurate greyscale printing.

